


 Fylde achieved 15 Honours  
in  
 North West in Bloom 2017  
and  
8 Discretionary Awards  
and  
 22 Its Your Neighbourhood 

Also see: [www.discoverfylde.co.uk](http://www.discoverfylde.co.uk)  
[www.fylde.gov](http://www.fylde.gov)



**Awarded to Seven Fylde 'Parks'  
& Associations 2017**  
<http://www.greenflagaward.org.uk>

### **Help 'St. Annes In Bloom' Spruce Up The Town**

(General tidy up, preparation & planting tubs etc.)



Tel: 07775 338057 or 01253 720698

<https://www.streetlife.com/> Facebook 'St Annes In Bloom'

Email: [fiona@boismaison.co.uk](mailto:fiona@boismaison.co.uk)

## What's On - All Year Round

### **Lytham Hall and Grounds (18th Century Manor House)**

Various opening times/charges. Lytham Hall, Ballam Road, Lytham, FY8 4JX. Tel: 01253 736652. <http://www.lythamhall.co.uk/> Parking, tea room (also serves light lunches), grounds and guided tours of house. Disabled access limited to all of house (contact hall for details). Disabled Access/WC to grounds.

### **Lytham Windmill + Lifeboat Museum – Indoor exhibitions**

To 17th 10.30am-1pm and 2pm-4.30pm various dates - see below. Lytham Windmill, The Green, East Beach, Lytham, FY8 5LD. Tel: 01253 794879 (Seasonal Only) or 01253 658443 Tourist Information Service. Email: [touristinformation@fylde.gov.uk](mailto:touristinformation@fylde.gov.uk) [www.lythamwindmill.co.uk](http://www.lythamwindmill.co.uk). Free – donations welcome.

**Windmill: Workings of the mill, Old and ancient Lytham, Milling and Bread making, Lytham Hall & Pier, Fishing & Shrimping, Lytham school days. Models and displays.**

**Lifeboat Museum: Discover and explore the Great Lifeboat Disaster of 1886, old and ancient Lytham, see the restored Victorian lifeboat.**

### **Various Exhibitions at the Heritage Centre**

OPEN Tuesday – Sunday & Bank Holidays, 10.00 am – 4 pm, Admission free – donations welcome. Heritage Centre, 2 Henry Street, Lytham, FY8 5ES. Tel: 01253 730787. [www.lythamheritage.co.uk](http://www.lythamheritage.co.uk)

### **Lowther Pavilion**

Box Office: 01253 794221 The venue is situated within the idyllic grounds of Lowther Gardens on West Beach in Lytham and is operated as a Charitable Trust.

### **Fairhaven Lake**

Fairhaven Lake is one of the borough's most popular attractions. Situated between Lytham and St Anne's, the salt water lake is positioned directly on the coast next to Granny's Bay and Stanner Bank. We are open throughout the school holidays and weekends as well (see times below) but please be aware that in adverse weather conditions the booking office will close. You can call the booking office directly on 01253 735 440 for additional information. <http://www.fylde.gov.uk/resident/gardens/fairhaven-lake/>

### **Markets & Car Boot Sales**

#### **Car Boot Sale (Indoor)**

Alternate Sundays from 8am, Oct to March. Lytham St. Annes High School Technology & Performing Arts College, Worsley Road, Ansdell, FY8 4DG. Tel: 0786 010 1851 (Phone first to check it will take place). <http://www.carbootjunction.com>

#### **Boundary Car Boot Sale (Indoor & outdoor)**

Saturdays, Sundays & Bank Holidays, gates open 6.30am. Boundary Road (rear of McDonalds & Stanways motors off Preston Road), Lytham, FY8 5HU. Tel: 0790 1857 846.

#### **Car Boot Sale & Sunday Market**

Sundays 7am-4pm & Bank Holidays. Fort San Antone/Great Birchwood Country Park, A584 Lytham Road, Warton, PR4 1TE. Tel: 01772 633162. [www.carbootjunction.com](http://www.carbootjunction.com) [www.fort-san-antone.com](http://www.fort-san-antone.com). Free parking. Restaurant & entertainment.

#### **Car Boot Sale**

Sundays (and some Saturdays) April to September. Greenhalgh Farm, Fleetwood Road, (J3 of M55 towards Kirkham), Greenhalgh, PR4 3HR. Tel: 0793 1584 915. Gates open 7am for sellers, &.30am for buyers. Cars £9.



### **Car Boot Sale**

Sundays Gates open 7am. Whyndyke Farm, Preston New Road, (J4 of M55 roundabout towards Blackpool), Marton, Blackpool, FY4 4XQ. Tel: 0785 2633 487 ([www.carbootjunction.com](http://www.carbootjunction.com)). Weather permitting. Check before attending.

### **Car Boot Sale (Indoor)**

Saturdays from 8am. South Shore Tennis Club, Midgeland Road, Marton Moss, Blackpool, FY4 5HZ. Tel: 07770 661295 (Phone first to check it will take place). [www.carbootjunction.com](http://www.carbootjunction.com) £7.50 per table. Refreshments

### **Fylde Rural Farmer's Market**

Every Saturday 10am-2pm. Blackleach Lane, Salwick, PR4 0RY. Tel: 01772 690622.

### **St Annes Indoor Market**

Mon-Saturday. Garden Street, St Annes, FY8 2AA.

### **St Annes Farmers Market**

St Annes Square, 9am – 2pm (Weather permitting)

Fabulous selection of stalls offering local and Lancashire produced items – mostly food but some non-food. Pop along and buy local and indulge in the wonderful variety while supporting farmers & small business.

### **Car Boot Sale**

Wednesdays & Saturdays 7.30am. The Garden place (formally Cropper Manor Garden Centre), Cropper Road, Blackpool, FY4 5LB. Tel: 0798 4355 264 (phone first to check it will take place).

### **Bebbington's Cropper Manor Car Boot's**

Saturdays and Wednesdays. Entrance next to new wind turbine, Cropper Road, Blackpool, FY4 5LB. Tel: 0797 1960 811. Sat car £6, Van £8. Wed Car/Van £5

### **Table Top Sale**

Sundays (set up 7am) 8.30am. Weeton Village Hall, Church Road, Weeton, PR4 3WD. Tel: 01253 836368 or 07925 374 024. £5 per stall. Cafe.

### **Various events e.g. Car Boot Sales Country Music, Line Dancing, Soul Music**

(Sun & Bk Hols), Fort San Antone, Great Birchwood, Lytham Road, Warton, PR4 1TE. Tel: 01772 633162 or 01772 631211. [www.fort-san-antone.com](http://www.fort-san-antone.com). Meals all day & bar. Camping.

### **Coffee Mornings and Groups**

#### **Coffee Morning**

Thursdays 10.30am-4pm. The White Church (Fairhaven United Reformed), 22a Clifton Drive, Fairhaven (between St Annes & Lytham) FY8 1BS.

#### **St Annes Civic Society**

Key independent organisation for the area in monitoring and commenting on planning issues. It is respected as an informed pressure group which conscientiously endeavours to protect and promote the built environment in which we live.' Membership from £10 per year.

<http://www.lsacivic.org/home/4588036461> Email: [lsacivic@hotmail.com](mailto:lsacivic@hotmail.com)

**Coffee Morning at Lytham Hall** for the Civic society every second Tuesday of the month at 10am.

#### **'Veterans for Fylde'**

Monday to Friday 10am-4pm. The Hub, 3 Richmond Road, St Annes FY8 1PE. Tel: 01253 781775. 'Contact for advice, support and comradeship. Meet fellow veterans and take part in community fund raising and social events throughout the Fylde.'

#### **Just For Men Support Group**

Tuesdays 11.30am. Alternating between Lord Derby (Pub), St Annes Road West, St Annes, FY8 1RG and Town House (pub), St Annes Road West, FY8 1SB. Free. Just for Men, is a peer to peer support group which tackles MH issues, health, wellbeing and general debate on topical issues.

### **Just Good Friends**

Loneliness is a terrible problem which we at Just Good Friends try hard to change. Regular Meeting in a variety of locations.

It's about changing loneliness to happiness, it's about laughter and fun and being there for each other.

Regular weekly meetings. Contact Bev on 07557734233

<https://justgoodfriends.org.uk/> Facebook: Just Good Friends Fylde and Wyre.

### **Sports & Fitness**

#### **Bicycle Rides (Organised rides usually accompanied by leaders)**

Various dates, times, routes, levels of ability, events, some for women only. Free (limited places & registration required for some rides). Run by Sky, British Cycling, Sport England and Adidas.

<http://www.goskyride.com/Blackpool>.



#### **Football Matches - AFC Fylde Football Club**

A.F.C Fylde Football Club, Mill Farm, Coronation Way, Wesham, PR4 3JZ. Tel: 01772 682593. <http://www.afcfylde.co.uk/>

#### **Rugby Matches – Fylde Rugby Club**

See [www.fylderugby.co.uk](http://www.fylderugby.co.uk) Woodlands Memorial Ground, Blackpool Road, Ansdell, FY8 4EL.

Tel: 01253 734733.

#### **Lytham Hall Parkrun - Weekly Free 5km Timed Run (Run at own pace)**

Saturdays 9am. Lytham Hall, Ballam Road, Lytham, FY8 4JX. Tel: 01253 736652.

<http://www.parkrun.org.uk/lythamhall/> <http://www.lythamhall.co.uk/> Free (Registration before first run required). Parking, tea room (also serves light lunches), grounds and guided tours of house. Disabled access limited to all of house (contact hall for details). Disabled Access/WC to grounds. Run for enjoyment - you against the clock, recording personal time for each run. It is entirely organised by volunteers - email [lythamhallhelpers@parkrun.com](mailto:lythamhallhelpers@parkrun.com) to help.

#### **Fylde Croquet Club**

Midgeland Road, Blackpool, FY4 5HJ. Tel 01253 735266. <http://fyldecroquet.co.uk/index999.php>

#### **Inner Power Pilates**

Freedom House, Snowdon Road, Lytham St Annes, FY8 3DP

Kelly Victoria Thorn- 07510 744242 [kelly@innerpowerpilates.co.uk](mailto:kelly@innerpowerpilates.co.uk)

#### **Pram Fitness**

Lytham Hall, Ballam Road, Lytham, FY8 4JX. Tel: 01253 405999. Mondays and booking is essential. [www.bright-bears.co.uk](http://www.bright-bears.co.uk) [www.lythamhall.org/events.htm](http://www.lythamhall.org/events.htm) Email: [bright-bears@hotmail.com](mailto:bright-bears@hotmail.com)

Only £4 per session. Get your little one comfy in their pram, and you toddler wrapped up- we are set to go. Lose weight walking and exercising with the pram. A fantastic way to lose weight with your child and with other mums. A beautiful walk around the grounds of Lytham Hall, a fabulous way to make friends, keep the children entertained and lose weight. Suitable for babies and toddlers.

#### **Fylde Bicycle Belles (Cycling Group for women)**

A cycling group run by women for women to encourage cycling confidence and camaraderie.

Organised monthly bike rides based in the Fylde area of Lancashire.

Tel: 01253 768889. <https://www.facebook.com/Fylde.Bicycle.Belles/posts/>

<https://www.cyclinguk.org/local-groups/fylde-bicycle-belles>

#### **Weekly Nordic walking**

Monday/Wednesday – Lowther Gardens – 10am

Tuesday – Booths, Lytham – 10am

Thursday – Beach Café, St Annes – 10am

Friday – Lytham Hall – 10am

Evening Walks – Tuesday – Queens Hotel – 7pm, Thursday – St Annes Swimming Pool – 7pm

Please note, an induction is required before you join a walk. Please visit:

<http://www.steps-out.org.uk> for more details. For a complete body work out and creating a better posture.

### **From Couch to 5K women's running group**

Lytham Hall, Most Friday mornings, new groups start throughout the year, 10.00am  
Admission: contact Jonas Bartle for details, via [jonas.bartle@fyldecoastymca.org](mailto:jonas.bartle@fyldecoastymca.org)

## **Walks**

### **Town Trail**

Map/guided notes to see places of interest in St Annes starting at the Pier. Covers 1½ - 2miles.  
Download from <http://www.lisacivic.org/> or call into Tourist Information centre for copy. Produced by Lytham St Annes Civic Society.

### **Walks - Fylde Coast Ramblers**

Saturdays and Sundays throughout month, various times/pick-ups. Tel: 01253 401135 between 5pm & 7pm. [www.fyldecoastramblers.co.uk](http://www.fyldecoastramblers.co.uk)

### **'Walks to Fitness'**

Thursdays 1.30pm. Start at St Annes YMCA, 97 St Albans Road, St Annes, FY8 1XD. Tel: 01253 724117. [www.walkingforhealth.org.uk](http://www.walkingforhealth.org.uk) £1 inc tea or coffee at the end of the walk. Take place all year round. All levels of fitness are catered for, suitable for all ages and abilities.

### **Walks - Lytham St Annes Rambling Club**

Saturdays and Sundays, various pick-up points. Tel: 01253 727264. [www.lytham-ramblers.co.uk/](http://www.lytham-ramblers.co.uk/) Grade A, B & C walks or do your own thing. Children to be accompanied by an adult.

### **Walks – Fylde Naturalists**

Most Saturdays and during summer there are mid-week walks. Local pick-ups. Charges from £7. Tel: 01253 316713. [www.fyldenaturalists.co.uk](http://www.fyldenaturalists.co.uk)

### **Fell walks – Freebooters Rambling Club**

Second Sunday of every month. Organised Fell walks. Various pickup points between St. Annes, Lytham, Warton, Freckleton, Kirkham and Broughton (Preston). Fares £7 Adults, £4 children. There are usually A & B walks, or you can 'do your own thing'. If you are interested in coming or would like more info, just email: [FreebootersRamblingClub@gmail.com](mailto:FreebootersRamblingClub@gmail.com)

## **Volunteering**

### **Fylde Coast Volunteer Groups:**

#### **Friends of the Estuary**

When: Weekly, every Monday at 10:15am  
Meeting Point: Lytham Lifeboat station Car Park, Lytham  
Info: [www.friends-of-the-estuary.co.uk](http://www.friends-of-the-estuary.co.uk)

#### **Fairhaven Coastal Care Group**

When: Weekly, every Wednesday at 10am  
Meeting point: St Paul's Car Park at Fairhaven Lake, Lytham St Annes

#### **St Annes Beach Care Group**

When: Weekly, every Tuesday at 10am  
Meeting point: St Annes Pier, St Annes-on-the-sea.

### **Fylde Sand Dunes Project – Volunteers Welcome**

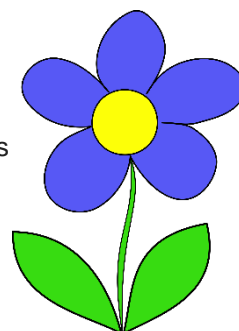
Volunteers welcome in many different projects. For information on volunteering with this project, just contact: Catherine Haddon, T: 01772 318 374, E: [chaddon@lancswt.org.uk](mailto:chaddon@lancswt.org.uk). The project is a partnership between Fylde Council and Lancashire Wildlife Trust to do conservation work, improve & widen the dunes along with maintaining Clifton Drive nature reserve. Volunteer task days take place every Thursday at the Nature reserve and dunes from Starr Gate, Blackpool to Church Scar in Lytham. Everyone welcome to have a go to see if they enjoy it; if they do they will be required to register as a volunteer with Lancashire Wildlife Trust (online or handwritten form).

### **Help 'St. Annes In Bloom' Spruce Up The Town Volunteers**

We are all volunteers who would like to see St. Anne's looking colourful with vibrant planting to lift our town. Throughout the year we plant and maintain numerous containers, large planters and beds around the town centre to create beautiful floral displays, making our town look more attractive to locals and visitors alike.

Whether you can do a little or a lot, everyone is welcome. Get in touch today to find out how you can help. No experience is necessary so why not come and join us, have fun and help keep our town blooming.

<https://stannesinbloom.com> - Fiona Boismaison - Tel (01253) 724310 - Email: [fiona@boismaison.co.uk](mailto:fiona@boismaison.co.uk)



### **Arts, Crafts & Book Clubs**

#### **Craft Group**

Alternative Thursdays 2pm-4pm. Annex, The United Reformed Church, St Georges Road, St Annes, FY8 2AE. <http://www.stannesurc.org.uk/>

#### **Solaris Centre – Various Events e.g. Photographic, Crafts, Displays**

Mon-Fri 8.30am-5pm, Sat/Sun 10am-5pm. Solaris Centre, New South Promenade, Blackpool, FY4 1RW. Tel: 01253 478020. Free entry. Café (Dog friendly). Playground. 'Set in 4 acres of grounds the Solaris Centre features a high level of energy-efficient features in its design.'

#### **Art Exhibitions & Community Activities**

Various Dates/times up till 10pm. The Pavilion Cafe, Ashton Gardens (Park), St Georges Road, St Annes, FY8 2AE. Tel: 01253 724440. [www.thepavilioncafe.org](http://www.thepavilioncafe.org)

#### **Book Clubs, Story Time, Poetry Club, Literature Based Activities**

Various days/times/age groups. Storytellers Inc Bookshop, 7 The Crescent, St Anne's, FY8 1SN. Tel: 01253 781690. <mailto:info@storytellersinc.co.uk> [www.storytellersinc.co.uk](http://www.storytellersinc.co.uk) £2. Disabled WC and baby changing facility.

#### **Glass Craft Classes**

190 Clifton Drive South, Lytham St. Annes, FY8 1HQ Phone: 01253 727760

Our workshops are in Lytham St Annes on The Fylde Coast. They run from 10.00 – 16.00. We take no more than 8 students. Booking Essential.

<https://www.craftcourses.com/courses/glass-fusing-and-slumping-for-beginners-and-improvers>

#### **Monthly book group**

Lytham Hall, Every last Monday of the month, 10am

Contact Katie Clapham from Storytellers Inc. - <http://www.storytellersinc.co.uk/>

#### **Workshops & Demonstrations (Upcycling, Chalk painting, Using sewing machine etc.)**

Heima Vintage and Furniture Shop, 12 Station Road, Lytham, FY8 5DH. Tel: 07940 782506.

Cost including materials including paint & fabric that you will need, and refreshments. Booking necessary. Limited places.

#### **R Tilly - Arts & Crafts Workshops, Classes, Parties**

Various dates/Times/Charges. `r Tilly's Art and craft Studio, 25 St Andrew's Road South, St Annes, FY8 1PZ. Tel: 01253 788546. <https://www.rtilly.co.uk/>. Examples: Adult colouring, textiles, paper craft, paint parties, upcycle frames, lino-cuts into print making, children's craft.

#### **Booth's Art Gallery**

Fylde Gallery, Booths Supermarket, Haven Road, Lytham, FY8 5EG. 10am-4pm Free.

#### **Various Exhibitions at the Heritage Centre**

OPEN Tuesday – Sunday & Bank Holidays, 10.00 am – 4 pm, Admission free – donations welcome. Heritage Centre, 2 Henry Street, Lytham, FY8 5ES. Tel: 01253 730787. [www.lythamheritage.co.uk](http://www.lythamheritage.co.uk)

## **Quiz & Open Mic Nights**

### **Open Mic Night**

Every other Wednesday, 8pm until late. Fifteens at St Annes, 42 St. Annes Road West, St. Annes. FY8 1RF. Tel: 01253 725852. <http://www.fifteensstannes.com/>

### **Epic Quiz Night**

Wednesday evenings 8.30pm. The Water's Edge, Heyhouses Lane, St Anne's, FY8 3RG. Tel: 01253 728294. <http://watersedgelythamstannes.co.uk> Entry charge unknown. Evenings includes: Rock & Roll Bingo, Play your Cards Right, Beat the Buzzer and Bully's Board. Loads of prizes!

### **Quiz Night at Singleton Village Hall**

Saturdays at 7pm. £6.00 per person, to include a hotpot supper and pudding!  
Teams of up to 6 people  
Contact Sally to book your team! 01253 886687 OR 01995 670386

## **Children's Activities & Clubs**

### **Park View 4U**

Playground equipment sectioned into age groups; woodland area, Eco Pod, Community centre, cafe, toilets, sports facilities, amphitheatre etc. Regular and one-off activities for all ages/abilities held indoors/ outdoors at the park's facilities e.g. Gardening club, nature walks, walking football, natal hypnotherapy, Bootcamp, BMX balance academy, disabled cycling, community choir, jitterbugs classes, junior herbalist club, pregnancy relaxation classes etc. Many activities are free. Park View 4U, Park View Eco Pod, Queen Elizabeth 11 Park View Playing Fields, Park View Road, Lytham, FY8 4JE. Tel: 01253 741955. Email [info@parkview4u.org.uk](mailto:info@parkview4u.org.uk) [www.parkview4u.org](http://www.parkview4u.org) Run by Park View 4U charity organisers and volunteers.

### **Activity Sessions**

Every other Wednesdays 1pm-3pm. Singleton Village Hall, Station Road, Singleton, FY6 8LS.

### **Little Gang & Toddler Group**

Fridays 10am-11.30am. Singleton Village Hall, Station Road, Singleton, FY6 8LS.  
[www.singletonvillagehall.org](http://www.singletonvillagehall.org) £2.50 per child including tea/coffee, juice & biscuits. Additional child over 6mths £1 each. Fun, games, crafts & toys.

### **See and Do Club, Children's art-based activities at the Grundy Gallery**

Saturdays 10.30am-12noon. £3 (Places can be booked or pay at door). Grundy Art Gallery, Queen Street, Blackpool, FY1 1PX. Tel: 01253 478170. <http://www.grundyartgallery.com/> The See & Do club is a joint initiative between Grundy Art Gallery and Blackpool Libraries. Workshops take place on Saturdays throughout the year.

### **Harry the Hound's Kids Club**

Houndhill Shopping Centre, Harry the Hound has something special on the first Saturday of every month, with FREE Family Activities between 1pm-3pm.  
Our mischievous mascot will be hosting a number of fun activities for the kids in the shopping centre. All ages are welcome to join in the event.

#### **FREE Membership**

Collect your loyalty stamps at each of the free events and receive an amazing Christmas gift. All ages are welcome to join in the next event.

### **Rock Making Factory Demonstration**

Monday to Friday (excluding Bank Hols & Christmas break) 9am-4pm (Last entry 3.30pm).  
Coronation World, Wellington Point, Amy Johnson Way, Blackpool Business Park, Blackpool, FY4 2RG. Tel: 01253 362810. <http://www.coronationworld.co.uk/> Free. Free parking. Access includes stairs – contact with particular requirements. Shop. Café. Visit the working factory that makes sweets and rock.

### **Ramp City WSA Skatepark (Indoor skateboard park)**

Indoor skateboard venue. See website or phone for opening times (often extended in school holidays). Cropper Rd, Marton, Blackpool, FY4 5LB. Tel: 01253 699005. [www.rampcitywsa.co.uk/](http://www.rampcitywsa.co.uk/)  
Car park, equipment shop, Coast Riders Diner on site.

### **Rock Candy Kingdom – Rock Making Demonstration**

Every day (check for times & Bank Holidays). Rock Candy Kingdom, 19 Chapel Street, Blackpool, FY1 5AW. Tel. 01253 751136. [www.rockcandykingdom.com](http://www.rockcandykingdom.com) Email. [info@rockcandykingdom.com](mailto:info@rockcandykingdom.com) Free. '...All your traditional favourites freshly made and the largest selection of named rock and football rock in the UK. Come along to our rock making demonstration and see how rock is produced in the traditional way - all handmade, see how the lettering is formed and how the vibrant colours are placed on the outside.

### **Wild Discovery**

Monday: 10:30am - 2pm (Parent & Toddler 'Wild Messy Play' Mornings)

Tuesday & Wednesday: 10:30am - 4pm

Thursday & Friday: Closed

Saturday & Sunday: 10:30am - 4pm

*Last admissions 1 hour before close.*

Ribby Hall Holiday Village, Ribby Road, Wrea Green, PR4 2PR. Tel: 01772 673836.

<http://www.ribbyhall.co.uk/eat-drink-play-shop/wild-discovery> Adult £7. Child £6. Under 2yrs free.

Family prices available. Annual passes available. 'Meet and greet our friendly animals through interactive and educational experiences. Say hello to our friendly Farmyard animals, take a walk through the Exotic House to encounter creatures of the jungle, before walking with animals from around the world in our Safari Walk...' Timetable of talks & activities available for each day. For H&S of animals and guests under 12yrs must be accompanied by an adult and entry may be restricted at times.

### **Baby Bounce & Rhyme at Ansdell**

Thursdays 10:30am, Ansdell Library, 59 Commonside, Ansdell, FY8 4DJ

Enjoy lively sing-along songs, gentle movements and rhymes with your baby, plus meet and chat with other parents and carers. Suitable for babies up to around 18 months of age.

Ansdell Library - 0300 123 6703

### **Home-Start Fylde and Wyre - Toddler Group.**

Mondays, 1:30pm St Joseph's Catholic Primary School, Wesham PR4 3HA

We work with families who have children up to the age of 11 in the Fylde area and run stay and play groups at community centres in Fylde and Wyre. Support is free confidential and non-judgemental and helps to: Reduce family isolation and increase social support networks. Strengthen parent-child relationships. Improve parents' emotional health and wellbeing Develop and improve parenting skills. Improve the home environment. Improve children's health wellbeing and development. Increase access to health education and community services.

Tracy Bradshaw - 01253 728615 [tracybradshaw@homestartbfw.org.uk](mailto:tracybradshaw@homestartbfw.org.uk)

<https://www.homestartbfw.org.uk>

### **Winter Woodland Creature Trail**

Lytham Hall, Admission £1 for a trail from the tearoom or office

Find 14 woodland animals and birds hidden around our woods. Answers can be found in the display cabinet in the Tearoom foyer.

Parking available. Toilets. Tea room. Hall open at selected times.

### **Treasure Hunt**

Lytham Hall, Admission: download the treasure hunt, currently £3.50 (discounted)

The Lytham St Annes Lions have created a fabulous treasure hunt, which you can download via [www.coastaltreasurehunts.org](http://www.coastaltreasurehunts.org) - follow the trail, answer the questions and see how you fare on the leaderboard. The profits are shared between Lytham Hall and other local charities. A fun way to get the family active.



## **Dancing**

### **Ballroom, Social & Sequence Dancing**

Sundays 8pm-11pm. Best Western Glendower Hotel, North Promenade, St Annes, FY8 2NQ.

Tel: 01253 780599. £4. Ballroom, Sequence, Latin. All welcome – singles and couples.



### **Morris/Clog Dancing**

Thursdays 7.45pm-9.45pm. Warton Village Hall, Church Road, Warton, PR4 1BD. info@fyldecoastcloggers.co.uk

### **The Sands Venue – Various including Tea dances, Tribute acts, Swing, Soul**

Thursday to Sunday: Meals served 7pm-8.15pm (pre booked), entertainment 9.30pm-12midnight.

The Sands Venue, Old Palace Discothèque, Palatine Buildings, Promenade, Blackpool, FY1 4TQ.

Tel: 01253 625262. www.the-sands-blackpool.co.uk Waiter service. Dress code: Smart, no jeans or trainers. Live entertainment inc: tribute acts, Swing bands, Soul, Tea dances etc.

### **Salsa Dancing**

Wednesdays 7:30pm-10:30pm. Ex Service Men's Club, Alexandra Road, Lytham St Annes, FY8 1YE.

Tel: 01253 721033 <http://www.salsanorthwest.co.uk/classes/>

### **Up-to-date Sequence**

St Cuthbert's Parish Church Hall, Church Road, Lytham St Annes, FY8 5QL

Monday – Afternoon, 2:00pm to 4:00pm. Saturday – Evening, 7:15pm to 10:15pm

Mobiles: Sylvia: 07714 735 399, Graham: 07765 554 877

### **Modern Sequence**

Fairhaven - Parish Church (St Paul's), Clifton Drive, Lytham St Annes, FY8 1BZ

Tuesday evening 7.00pm - 10.00pm

Sunday evening 7:30pm to 10:15pm

Bernard & Audrey 01253 776 255.

## **Music and Entertainment**

### **West Coast Rock Café 'Club Above' (Bands & Comedy)**

5-7 Abingdon Street, Blackpool, FY1 1DG. Tel: 01253 751283 [www.westcoastrock.co.uk](http://www.westcoastrock.co.uk)

[www.list.co.uk/place/20004222-west-coast-rock-cafe](http://www.list.co.uk/place/20004222-west-coast-rock-cafe). Club Above nightclub is over the restaurant, it features live bands e.g. Goth, Punk, Rock DJ nights and comedy club.

### **Funny Girls – Cabaret Over 18's Only – ID required if under 21yrs (Adult material)**

7pm-11.30pm (Closed Mondays), Funny Girls, Dickson Road, Blackpool, FY1 2AX.

Tel: 0844 247 2665 [www.funnygirlsonline.co.uk](http://www.funnygirlsonline.co.uk). From £3.50

standing, seating and meals available via prior booking. Entertainment from 8pm. Smart casual dress (jeans & trainers allowed if smart). Music, cabaret and dancing. Not for those easily offended. Enjoyed by all ages.



### **Entertainment – Bands, Karaoke, Quiz Nights**

Open every day 11am-12midnight (Sun 12noon-12midnight). The Station Tavern, Station Square, Lytham. FY85PA. Tel: 01253 731991. [www.stationtavern.co.uk](http://www.stationtavern.co.uk) Food served. Real ales. Poker nights. Child & dog friendly.

### **Music, Songs, Poems & Pints**

Tuesdays 8.30pm. Plough Inn, Chain Lane, Staining, FY3 0BX. Tel: 01253 883585.

<http://www.theploughatstaining.co.uk/> Free admission. All styles of Music Welcome. Songs from Folk to Modern. Poems from Monologues to Homer.

**Folk Club**

Wednesdays fortnightly 8pm. Willows Folk Club, Willows Social Club, Bryning Fern Lane, Kirkham, PR4 2BQ. Tel: 01772 640959. For the very best in contemporary and traditional folk and music from home and abroad. The club meets most alternate Wednesdays. All programmes are 'pay on the door' unless stated otherwise in the diary. Door entry is £10 per head unless advised otherwise on this site.

**Live Singing**

Last Tuesday of every month 2pm-3pm. Plough pub, 2 Lytham Road, Freckleton, PR4 1XA. Tel: 01772 635991. Email: hello@ploughfreckleton.co.uk Free admission. Entertainment from Joanne - classic jazz, Etta James, Frank Sinatra etc.

**Freckleton Village Singers (Choir)**

Thursdays 7.30pm. Freckleton Methodist Church Hall, 123 Kirkham Road, Freckleton, PR4 1HS. Tel: 01772 675947 or 07763066949. Sing Classical, Pop & Jazz.

**Trivia Night**

Wednesdays 8pm-10pm. Aztex Venue, Pleasure Island, South Promenade, St. Annes, FY8 1LS. Tel: 01253 736409. <https://www.aztexvenue.co.uk> Email: enquiries@mwlevents.co.uk £1 per player. Different theme each week.

**Open Mic Night**

Thursdays 8pm-Late. Aztex Venue, Pleasure Island, South Promenade, St. Annes, FY8 1LS. Tel: 01253 736409. <https://www.aztexvenue.co.uk> Email: enquiries@mwlevents.co.uk Free Admission. Singing & comedy.

**Love Fridays at Aztex Venue (Late Night Dancing)****Strictly 18yrs+**

Fridays 10pm-2am. Aztex Venue, Pleasure Island, South Promenade, St. Annes, FY8 1LS. Tel: 01253 736409. <https://www.aztexvenue.co.uk> Email: enquiries@mwlevents.co.uk. Free entry before 11pm. £2 after 11pm. DJ Paul O'Brien, guests, Chart, RnB and Requests.

**St Annes Community Choir**

Wednesdays 7pm-8.30pm. Memorial Hall (AKA The Pensioners Hall), St Albans Road (By YMCA Sports Centre), St Annes, FY8 1UZ. Membership £10 per year, weekly subs £2.50. All abilities are welcome.

**Music, Songs, Poems & Pints**

Tuesdays 8.30pm. Plough Inn, Chain Lane, Staining, FY3 0BX. Tel: 01253 883585. <http://www.theploughatstaining.co.uk/> Free admission. All styles of Music Welcome. Songs from Folk to Modern. Poems from Monologues to Homer.

**Entertainment**

Various – check for programme. St Annes Ex-Service Mens Club, 22 Alexandra Road, St. Annes, FY8 1YE, Tel: 01253 781430. [www.stannes-exservicemens.co.uk](http://www.stannes-exservicemens.co.uk)

**Entertainment**

Various – check for program. Freckleton Sports & Social Club, Preston Old Road Freckleton, PR4 1PB. Tel: 01772 632318. [www.freckleton.org](http://www.freckleton.org)

**Live Music**

Sunday afternoons, Fifteens (pub), 42 St Anne's Road West (Main shopping area), St Annes, FY8 1RF. Tel: 01253 725852. <http://fifteensstannes.com/> Free.

**Sunday Sessions – Live Music**

Sunday afternoons. No 15 Bar, 42 St Anne's Road West, St Annes, FY8 1RF. Tel: 01253 725852. <http://fifteensstannes.com/> Free.

### **Music Songs Poems & Pints**

Tuesdays 9pm. The Plough (pub), Chain Lane, Staining, FY3 0BX. Tel: 01253 883585. Free.  
'Everyone welcome, whether you join in with a Tune, Song or Poem or just want to listen. All styles welcome.

### **Viva Blackpool – Various inc' Cabaret shows, Comedy, Family shows, Tribute acts**

Various days & evenings & times. Viva Blackpool, Promenade (side of Tower near Harry Ramsden's fish & chip restaurant), Blackpool, FY1 4QU. Tel: 01253 297297. [www.vivablackpool.com](http://www.vivablackpool.com) Various admission prices. Meals available

### **Karaoke**

Friday Evenings (may not be every week). Royal British Legion Club, Mayfield Road, St Annes, FY8 2DR. Tel: 01253 724420.

### **Other**

#### **Penny Farm World Horse Welfare, Rescue & Rehab Centre**

Wednesdays/Saturdays/Sundays 11am-4pm. Penny Farm, Preston New Road, Peel, Blackpool, FY4 5JS. Tel: 01253 766983. [www.worldhorsewelfare.org/information/pennyfarmevents](http://www.worldhorsewelfare.org/information/pennyfarmevents)  
Email: [pfvisitorofficer@worldhorsewelfare.org](mailto:pfvisitorofficer@worldhorsewelfare.org) free admission. Coffee shop. Free parking. See what the charity horse welfare centre does.

#### **Fylde Bike Meet**

Monday evening's approx 6.30–9.30. The Square (main shopping area), St Annes Road West, St Anne's. Free marshalled event whatever the weather (since 2005) on a good evening there can be hundreds of motorbikes.

#### **The Island Cinema**

Open every day. 4 screens. The Island Cinema, South Promenade, St. Annes. Tel: 01253 725331. [www.theislandcinema.com](http://www.theislandcinema.com) Special offers available e.g. all seats £3 on Mondays. 'Please be aware that, at present, only 3 of our 4 screens are accessible to wheelchair users, so please contact us in advance to check on film screens.'

#### **Various events & Groups – Ansdell Library**

Various days/times. Ansdell Library. 59 Commonside, Ansdell, FY8 4DJ. Tel: 01253 738554. <http://www3.lancashire.gov.uk/events> Besides usual library services; regular and one-off sessions, activities and events are held at the library e.g. Family History Group, Get Online computer courses, Reading Group, Baby Bounce & Rhyme, Toddler Rhyme Time, Family Games, Bedtime Stories, Book and Bric a Brac Sales, Knit & Natter. Facilities: Public computers, Local studies collection, public WiFi, printing, photocopying. Many events free, some have a small charge.

#### **Various Events & Groups – Kirkham**

Various days/times. Kirkham Library - Station Rd, Kirkham, Preston, PR4 2HD - 01772 684479. <http://www3.lancashire.gov.uk/events> Besides usual library services; regular and one-off sessions, activities and events are held at the library e.g. Friday Reading Group, Family Board Game, Baby Bounce and Rhyme, Knit and Natter, Creative Writing Group. Facilities: Public computers, Local studies collection, public WiFi, public toilet, printing, photocopying, baby changing, plasma screen. Many events free, some have a small charge.

#### **French Club Lytham**

Tuesdays, 7pm. The Station Lytham. Do you want to speak French in an informal setting perhaps with a glass of wine or two? If the answer is OUI, then these evenings are for you? It doesn't matter how much or how little French you speak, the evening is very informal. A table is reserved from 7pm every other Tuesday at the Station Pub & Grill (FY8 5PA).

#### **Ripley's Believe It or Not! Odditorium (Exhibition of unique, strange, unusual & extraordinary)**

Everyday 10am-8pm (Check Christmas opening). Ripley's Believe It or Not!, Ocean Boulevard, Pleasure Beach, Promenade, Blackpool FY4 1EZ. Tel: 01253 341033. [www.ripleys.com](http://www.ripleys.com) Adult £6. Student £5. OAP £4. Child £3. Under 4yrs free.

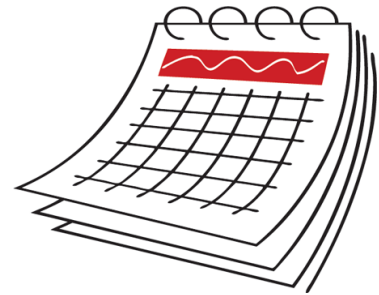
'Inside you will discover a unique collection of strange, unusual and extraordinary exhibits as you journey through 8 themed galleries, across 2 floors. Exhibits include the fertility statue which has been on display for over four years and so far we have had over 1,000 confirmed pregnancies...'

**Baby Massage Course**

Ages 6wks-1yr

Mondays 1.15pm. Funtastic Play, Snowdon Road, St Annes, FY8 3DP. Tel: 01253 640016.  
www.bright-bears.co.uk Email: bright-bears@hotmail.com £25 for 5 sessions. Sensory blankets & lights.

**Monthly Events**



**Guided health Walks- FREE.**

**These regular walks are designed to help you get fit, stay fit and keep healthy.**

**Thornton-** Tuesdays in January (1<sup>st</sup>, 15<sup>th</sup> and 29<sup>th</sup> 14.00-15.00) Marsh Mill Tavern, Marsh Mill Village, Thornton, Lancashire, FY5 4JZ Telephone: 01995 602125  
"Easy guided walk in the green areas of Thornton-Cleveleys. Involves some road walking, crossing recreational fields and a woodland path".

**Knott End-** (Wednesday 2<sup>nd</sup> and 16<sup>th</sup> January 14.00-15.00)  
Knott End Cafe, Knott End-on-Sea, Lancashire, FY6 0EA  
Telephone: 01995 602125  
"An urban/rural walk through Knott End including sea front and the golf course, walking shoes may be required during certain times of the year"



**Wyre Estuary Country Park-** (Sunday 6<sup>th</sup> January 14.00-15.00) River Road, Stanah, Thornton Cleveleys, Lancashire, FY5 5LR Telephone: 01995 602125  
"Urban/rural walk through the Wyre Estuary Country Park, comfortable footwear required also suitable for beginners. If one hour is a bit too long for you, this walk is available as a gentle amble at 30 minutes. Please let the leader know if you would find this helpful when you join the group".

**Great Eccleston-** (Tuesday 8<sup>th</sup> and 22<sup>nd</sup> January 14.00-15.00) Great Eccleston Village Centre, High Street, Great Eccleston, Lancashire, PR3 0YA Telephone: 01995 602125  
"Pleasant walk through Great Eccleston and along the River Wyre, walking shoes will be required for this walk. This is one of the more advanced walks, including stiles"

**Memorial Park, Fleetwood-**(Wednesday 9<sup>th</sup> January 2019 10.30-11.30) Cenotaph, Warrenhurst Road, Fleetwood, Lancashire, FY7 6TP Tel: 01995 602125  
"An easy circular walk around Memorial Park and local area"

**Cleveleys Health Walk-**(Saturday 12<sup>th</sup> January 2019 10.30-11.30) Cleveleys Community Centre, Beach Road, Cleveleys, Lancashire, FY5 1ER Tel: 01995 602125  
"A circular walk around Cleveleys, comfortable footwear advised. This walk is suitable for beginners. If one hour is a bit too long for you, our health walk leaders can help by starting you off at a gentle amble at 30 minutes"

**Larkholme Health Walk-** (Saturday 19<sup>th</sup> January 2019 10.30-11.30) Rossall Hospital car park, Westway, Fleetwood, Lancashire, FY7 8JH Tel: 01995 602125  
“A circular coastal walk taking in the promenade and wildlife rich Larkholme Grasslands. This walk is suitable for beginners”

**St Michaels Health Walk-** (Wednesday 23<sup>rd</sup> January 2019 14.00-15.00) “A circular country walk along tracks, lanes and across fields. A slightly more advanced walk using stiles. Along the riverside to Catterall’s Farm, across Rawcliffe Road, north through fields, right to Fairfield Farm then south along laneback to Rawcliffe Road and The Grapes”

## Theatre



**The Carpenters Experience-** (Sunday 6<sup>th</sup> January 2019 18.00-22.30) 3 Church Street, Blackpool, Lancashire, FY1 1HJ Telephone 01253 297297.  
“The Carpenters Experience take to the stage at Viva Blackpool to pay tribute to Karen and Richard Carpenter. The Carpenters Experience will leave you feeling on Top Of The World after a night filled with nostalgia! Lead singer Maggie is a hugely experienced performer with over 20 years in the business. Her pure and powerful voice is a beautiful tribute to the late, great Karen” **Adult tickets from £16.00**

**The Russian State Ballet of Siberia-** (Cinderella 11<sup>th</sup> January, Swan Lake 12<sup>th</sup> January, The Nutcracker 13<sup>th</sup> January) 33 Church St, Blackpool FY1 1HT Telephone 01253 290190.

“The Grand Theatre Blackpool, are excited to announce that The Russian State Ballet of Siberia will be returning to Blackpool with three stunning productions, accompanied by a live orchestra, The Russian State Ballet Orchestra.

Cinderella (11 Jan) – The world’s favourite rags to riches fairy-tale where dreams can come true is a magical mix of Prokofiev’s energetic score and lively choreography.

Swan Lake (12 Jan) - Tchaikovsky’s haunting score brings life to the greatest ballet of all time. From the palace ballroom to the moon-lit lake, this tale of tragic romance has it all.

The Nutcracker (13 Jan) – The famous fantasy ballet begins on Christmas Eve. Be swept away to a fairy-tale world where toys spring to life, the Mouse-King and his army battle the Nutcracker Prince, and travel through the Land of Snow to an enchanted place where the magic really begins”

**Telephone the Grand Theatre for ticket prices on 01253 290190**

**Odyssey-** (Saturday 5<sup>th</sup> January 2019 19.30-00.00) 3 Church Street, Blackpool, Lancashire, FY1 1HJ Telephone 01253 297297. “The Glory Days of top vocal groups Odyssey, one of the most successful soul/disco acts of their era”.

**Standard adult price £21.00**

**Brother Beyond and Hazell Dean-** (Saturday 12<sup>th</sup> January 2019) 3 Church Street, Blackpool, Lancashire, FY1 1HJ Telephone 01253 297297. “Viva Blackpool is thrilled to have Brother Beyond and Hazell Dean join them on Saturday 12th January 2019. It’s time to dust off your leg warmers, start back combing your hair again and big out your best 80s style outfit as Nathan Moore and Hazell Dean take to the Viva stage!”

**Standard adult price £21.00**

**Ray Quinn-** (Sunday 13<sup>th</sup> January 2019) 3 Church Street, Blackpool, Lancashire, FY1 1HJ Telephone 01253 297297. “Making his debut for 2019 the multi-talented Ray Quinn joins us here at Viva backed by a live Swing Band”.

**Standard adult price £27.50**

**Beyond the barricade-** (Saturday 19<sup>th</sup> January 2019 19.30-22.30) Preston Guild Hall, Lancaster Road, Preston, Lancashire, PR1 1HT Tel: 01772804444. “The UK’s longest running Musical Theatre Concert Tour features past principal performers from Les Miserables”. **Tickets from £24.50**

**Bowie Experience-** (Friday 25<sup>th</sup> January 2019 19.30-22.30) Preston Guild Hall, Church Street, Preston, Lancashire, PR1 1HT Tel: 01772804444. "Bowie Experience is a spectacular concert celebrating the sound and vision of David Bowie. A must see for all Bowie fans, the latest production features all the hits from A to Ziggy".

**Tickets from £26.00**

**An Audience with Peter Anthony-** (Wednesday 23<sup>rd</sup> January 2019 from 7.30pm) Lytham Hall Ballam Rd, Lytham Saint Annes FY8 4JX Telephone: 01253 736652. "Peter Anthony will be in concert at Lytham Hall again this coming January. Accompanied by his musical director Andy Knight. Hotpot supper included & a Licensed bar"

**Tickets £15.00**

**Ghost Hunt-**(Saturday 19<sup>th</sup> January 2019 9pm-2am) Lytham Hall Ballam Rd, Lytham Saint Annes FY8 4JX Telephone: 01253 736652. "Will you be brave and join us as we investigate the amazing Lytham Hall? After the sell out ghost tours it's time to delve deeper into the reported hauntings of this beautiful Georgian building. What will you experience during our experiments and vigils?"

**Tickets £25.00 available from [http://www.supernaturalevents.co.uk/lytham\\_hall.html](http://www.supernaturalevents.co.uk/lytham_hall.html)**

**The Wizard of Oz-** (Friday 4<sup>th</sup> January- Sunday 6<sup>th</sup> January) Lowther Pavilion, Lowther Terrace Lytham St.Annes FY8 5QQ Telephone 01253 794221. "Rainbow Dance Studios Present the Wizard of Oz"

**Tickets £13.00**

**Schools We Will Rock You-**(Thursday 24<sup>th</sup> January and Saturday 26<sup>th</sup> January 2019) Lowther Pavilion, Lowther Terrace Lytham St.Annes FY8 5QQ Telephone 01253 794221. "AKS Productions Presents "Schools Will Rock You!". The musical tells the story of a globalized future without musical instruments"

**Tickets £16.00**

## Other

**Big Garden Bird Watch-** (Sunday 27<sup>th</sup> January 2019) Hawthorne Park, Hawthorne Road, Thornton Cleveleys, Lancashire, FY5 5DQ Telephone 01253 823516."Identify and count the bird species to contribute to the countrywide RSPB survey"

**Free**

**Quirky Wedfest Wedding Open Day-** (Sunday 6<sup>th</sup> January 2019 11.00-16.00) "If you are after that non-traditional wedding or party and looking for some fun, magical and quirky ideas for your event then this is perfect for you. We will be working with a small selection of carefully chosen independent local suppliers known for their creativity and non-traditional style".

**Free Entry**

**WWE NXT UK Sporting Event-** (Saturday 12<sup>th</sup> January 2019 and Sunday 13<sup>th</sup> January 2019) Winter Gardens Blackpool, Church Street, Blackpool, Lancashire, FY1 1HU Telephone: 0844 856 1111. "NXT UK is a weekly episodic series featuring the greatest male and female competitors from the UK, including Pete Dunne, Mark Andrews, Rhea Ripley, Toni Storm, Tyler Bate, Trent Seven and Wolfgang"

**Tickets from £15**

**Free Basic Computer Training-**(Monday 7<sup>th</sup> January 2019 1.00pm-3.00pm) St Stephens on the Cliffs, St. Stephen's Avenue, Blackpool, FY2 9RB Telephone: Lionel on 07514 986777. "Do you have a laptop, tablet or smartphone, but don't feel confident using it? Blackpool Councillors, Danny and Michele Scott are funding Disability First CIO to deliver basic IT training courses"

**Open Event at Blackpool and Fylde College-**(Saturday 12<sup>th</sup> January 2019 10am-2pm) Ashfield Rd, Blackpool FY2 0HB Telephone: 01253 352 352. "Find out how to get your career on the right path, with information from Blackpool and the Fylde College"  
**Free**

**Grand Theatre Heritage Tours-** (Tuesday 8<sup>th</sup> January 11.00am- 1.00pm) The Grand Theatre, 33 Church Street, Blackpool, FY1 1HT 01253 290190. "Grand Theatre Heritage Tours 2019 are led by theatre archivists Geoff and Linda Tolson MBE. Stand on the raked stage and observe the cantilevered tiers of circles, boxes and pit – and the complete visibility of every seat in this atmospheric house"  
**Book tickets on 01253 290 190**

**Blackpool Pigeon Show-** (Saturday 19<sup>th</sup> and Sunday 20<sup>th</sup> January 9.30am- 5.00pm)  
"It's the largest gathering of pigeon fanciers in Great Britain and this will be its 47th time in the resort. There's something at the show for everyone who is interested in pigeons"  
**Ticket information contact: 01253 625252**



**Telephone: 01253 658 443 or [touristinformation@fylde.gov.uk](mailto:touristinformation@fylde.gov.uk)**

**Also see: [www.discoverfylde.co.uk](http://www.discoverfylde.co.uk)  
[www.fylde.gov](http://www.fylde.gov)**





Produced by Fylde Borough Council Customer Service Support team.

Lytham St Anne's Tourist Information Service, Town Hall, St Anne's Road West, St Anne's, FY8 1LW.  
Tel: 01253 658443.

Opening times: Mon, Tue, Thurs 8.30am-5pm, Wed 9am-5pm, Fri 8.30am-4.30pm.  
Closed Bank Holiday.

[www.fylde.gov.uk](http://www.fylde.gov.uk)  
[www.discoverfylde.co.uk](http://www.discoverfylde.co.uk)

Every effort has been made to ensure that the information listed is correct, we cannot accept any responsibility for inaccuracies, omissions, cancellations or errors.