

LITTLE ECCLESTON



The Cartford Inn



Find us at: Cartford Lane, Little Eccleston, Lancashire, PR3 0YP

On-site delicatessen and shop.

With rustic charm the deli offers some of the best produce from across Lancashire and international delicacies, which have been carefully selected by our passionate & knowledgeable staff.

Afternoon tea Enjoy three tiers of home-baked TOTI treats which includes our best selection of savouries, scones & an assortment of TOTI desserts. Thursday to Sunday 12 - 4pm

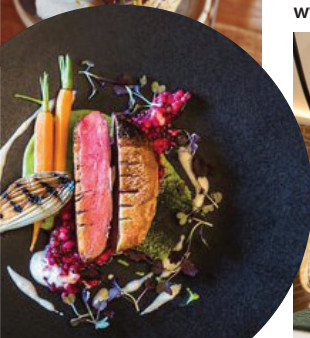
Our Restaurant is an expression of Lancashire's food culture and a showcase of the region's best produce. We use local and seasonal ingredients wherever possible, prepared sensitively and skilfully by our dedicated team of chefs. This includes seafood from Fleetwood docks, meat from nearby farms and seasonal, locally shot game. Alongside favourite British dishes, you'll find more innovative flavours, as well as a discernible proprietary French influence.

Stay at the Inn: The diversity of our accommodation is what makes us different...

Choose from a Petite luxury, Deluxe, Ground floor or Executive Bedroom. You might prefer the cosiness of one of our four amazing attic bedrooms or even the luxurious space of the penthouse.

For a cool escape you can even book one of the two cabins located at the end of the property, with its own landscaped grounds and an amazing view of the serpentine river.

www.thecartfordinn.co.uk • 01995 670166



Walks available in our **Walks around Wyre & Fylde** series:

Wyre

- GREAT ECCLESTON (FARMERS ARMS)
- GREAT ECCLESTON (HEALTH WALK)
- KNOTT END
- LANCASTER CANAL & CASTLE
- LANCASHIRE CHEESE WALK
- RIVER WYRE
- SHARD BRIDGE TO GARSTANG

Fylde

- LITTLE ECCLESTON
- LUND WAY & NEWTON WITH SCALES
- LYTHAM HALL & WITCH WOOD
- MEDLAR WITH WESHAM
- RIBBY WITH WREA
- RIVER RIBBLE RAMBLE
- SINGLETON

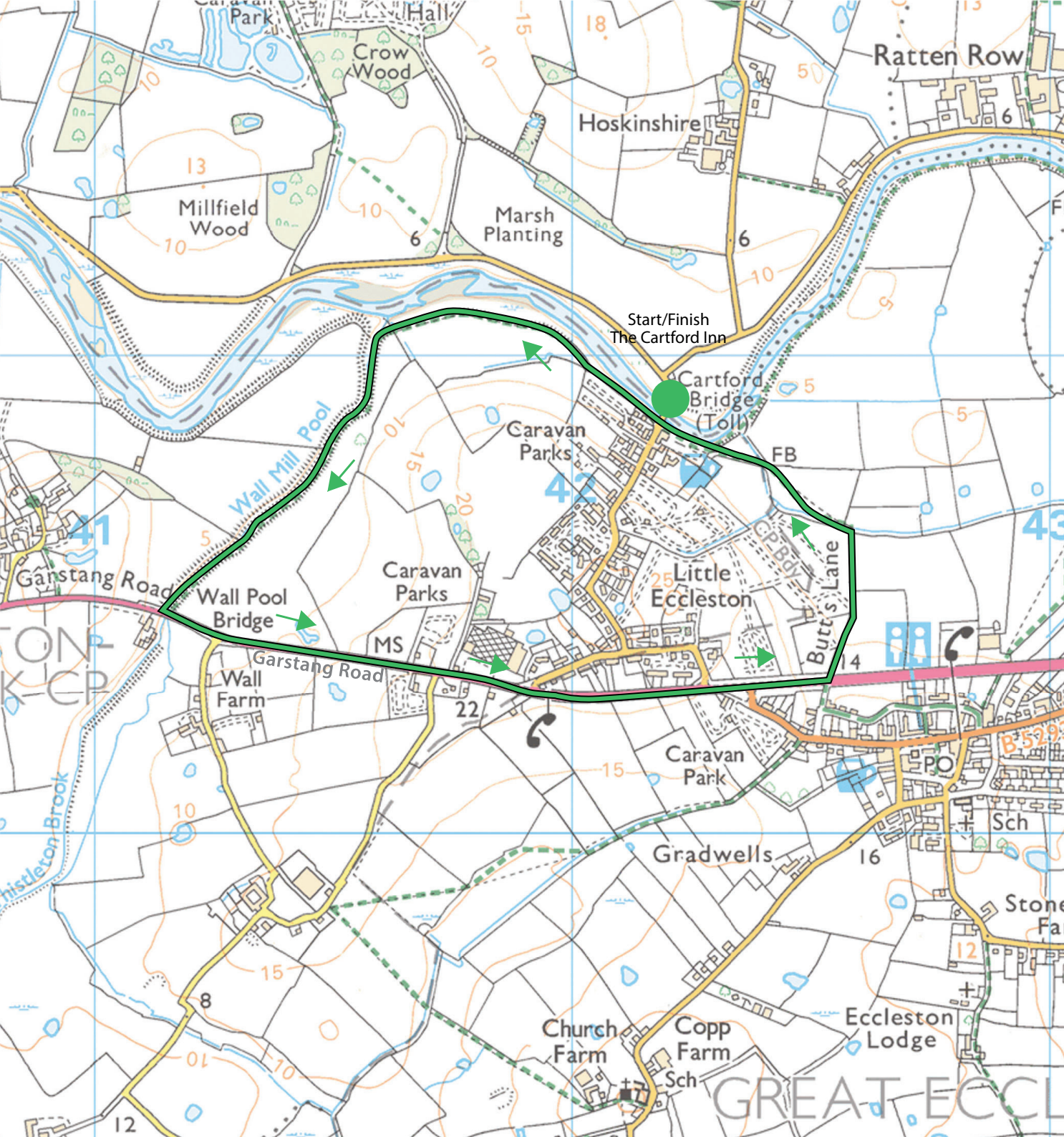


www.discoverwyre.co.uk

www.discoverfylde.co.uk

**WALKS
AROUND
WYRE
— AND —
FYLDE**





Little Eccleston

Little Eccleston-with-Larbreck is a civil parish in the Borough of Fylde, Lancashire.

It contains five buildings that are recorded in the National Heritage List for England as designated listed buildings, all of which are listed as Grade II. In the Domesday Book it comes after Eglestun as 'alia Eglestun' (another Eccleston) and Larbreck is not mentioned. Larbreck is a hamlet a mile or so beyond Little Eccleston.

The Cartford Inn, originally a 17th century coaching inn located at the historic crossing of the River Wyre.

Little Eccleston Hall was the home of the France family from Elizabethan times until the later 18th century and, now a farm, remains largely in its original form. Larbreck Hall, originally the home of the Molyneux family of Liverpool, was even older but was demolished some 40 years ago and completely rebuilt on the same site.

The Walk

Length: 2 miles.

Duration: 1 hour leisurely pace.

Accessibility: Flat with steps and kissing gates.

Features: River Wyre, Little Eccleston, Great Eccleston show ground.

Start/Finish: Cartford Inn.